

H Chair by YourSeat®



Rich nylon color, thin back frame, and strong sense of technology transparent mesh

When facing the back frame, you can see the dignified and steady back shape of the chair, the thin back frame on the side, which conveys the lightness brought by the high quality raw materials, combined with the transparent back mesh, and the H chair is full of technology and fashion.



The understanding of ergonomics

We try to study the key dimensions of office chairs to fit ergonomics for the compliance and convenience. For shorter users, we designed the shortest seat height and lower handrail height. For tall users, we designed a higher back frame, give user good back wrapping and support, and we use high specification cylinder rods, as well as a wide range of lifting armrest for support.



*There is a slight error in the measurement size due to the different personnel and methods.



A variety of configurations

As a swivel office chair, we have work chair, executive chair and stool chair. Polished aluminum five-star base, 4D armrest are available.

Every H chair designed a name tag cover, it could stock user name or enterprise information.

Our stool could lift and lock by plastic parts without screw, so it is easy to handle and lock fixed very much.



Every design is extremely attentive.

We designed a louver ventilation and heat dissipation hole at the bottom of the seat cover, it is easy to remove the heat gathered in the seat every time you move the body. The product specification is stored in the storage compartment, and the use information of the product is read at any time. The L-shaped tool will accompany the chair anywhere, remove, reassemble or disassemble the chair at any time to facilitate relocation and use. There is no glue and nails inside our seats. the seat cloth is detachable and easy to clean or replace.





Back Mesh

High quality nylon mesh made by Wintex* from Korea. There are six mesh colors stocked.

Armrest *

Standard armrest is high adjustable, on the top of armrest is soft PU cover.

.Height adjustment range 105 mm.

*4D Armrest as optional allow fluid adjustment in four directions:

.Height adjustment range 105 mm

.Side-to-side armcap adjustment range 60 mm: 30mm per arm cap

.Front-to-back adjustment range 50

.Pivoting arm caps :20 in and 20 out.

Seat Fabric

There are two series Medley and Atlantic collected from Gabriel*. Medley and Atlantic choose thirteen colors stocked.

Non-wooden Seat

To make sure the armrest could fixed assembly on seat. There is a painted steel panel inside the seat.

Some hole had designed on the foam cover useful for air circulation.

Foam is modeled have very nice comfort for seating on it.

Synchro Tilt Mechanism*

Synchronized to deliver greater control for more users. There are two control rods. One for lift seat, another for back lock. Standard mechanism have three position for lock.

* Slide Mechanism as optional offer the seat front-to-back range 50 mm.

Cylinder

We use class-4 cylinder by Korea SAMHONGSA*. The insid rod is 143 mm black level. It could make sure seat could lift mor than 130 mm.

The out rod cover have two color : black and grey optional.

Base*

Nylon base radius is 350 mm. It have three colors :white, black and grey.

*Polished Aluminum base is optional.

Casters

PA castor's diamert is 65 mm. It have two colors: black and grey.

* when you use on wood floor you should choose 60 mm soft PU castors to protect floor.

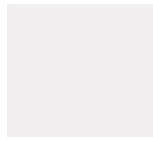
Nylon colors | Back frame



Black



Grey

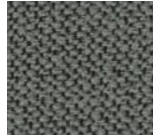


White

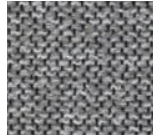
Fabric works available | Back mesh



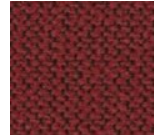
YFB-401 Black



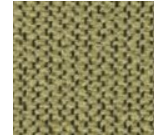
YFB-402 Grey



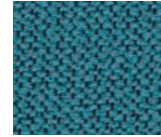
YFB-403 Light Grey



YFB-404 Red



YFB-405 Green

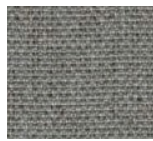


YFB-406 Blue

Upholstery from Medley and Atlantic by Gabriel® | Seat



YFS-301 Dark Brown



YFS-302 Light Grey



YFS-303 Blue



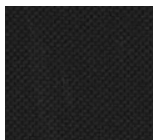
YFS-304 Green



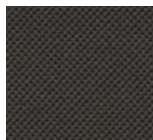
YFS-305 Red



YFS-306 Purple



YFS-401 Black



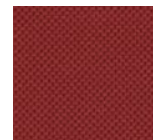
YFS-402 Black Grey



YFS-403 Dark Grey



YFS-404 Light Grey



YFS-405 Red



YFS-406 Green



YFS-407 Light Blue

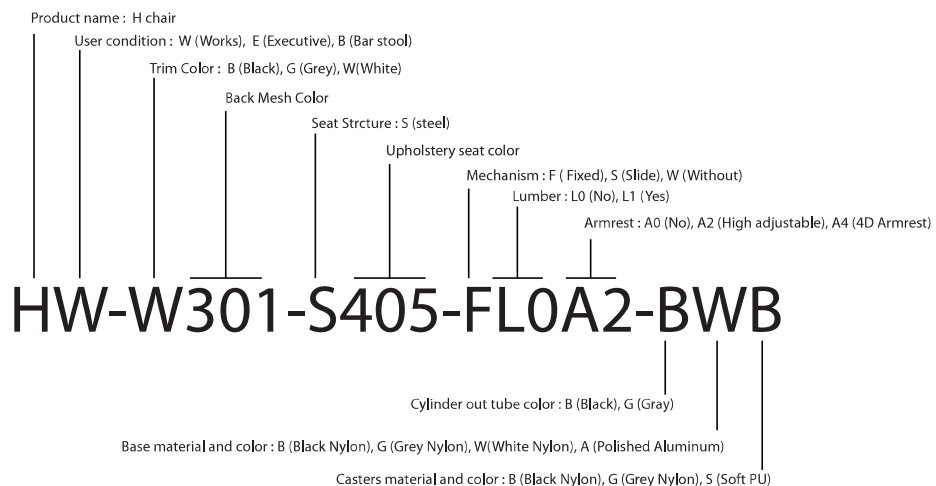
Belongs to the design, customer may have more idea than we stocked. Don't worry about that. You can send us the Wintex or Gabriel product item.

H chair Features

Grey back frame with grey armcap, grey seat plastic cover, grey mechanism control rob, grey cylinder, grey base, and grey casters. Grey seating frame is very match for Nowadays office space
White nylon back frame use black cylinder and casters as standard, you can change to grey in your order list.

H Specification

We show product details by a several words. It is very useful to recognize the production before open the box.



Warranty

H chair had past test by SGS belongs to ANSI/BIFMA X5.1 - 2017, No.SDHL1707014908FT. We provide 5-year warranty for full chair, 12-years for back frame and base structure.